

INCARGO S.L.

+ 30 years working for you

www.incargo.es



Head Office

Madrid
+34.91 4364640
ship@incargo.es

Branches

Las Palmas	Bilbao	El Ferrol	Palma de Mallorca	Algeciras	Lisboa	Laayoune	Callao	Montevideo
Fuerteventura	Barcelona	La Coruña	Alcudia	Ceuta		Agadir	Pisco	Rio De Janeiro
Tenerife	Sagunto	Vigo	Cartagena	Gibraltar	Tangier	Casablanca	Panama	Singapore



ABOUT **INCARGO S.L.**




About INCARGO S.L.


INCARGO SL is an international logistics and ship services provider, which for more than 30 years have been providing the highest level of air, sea and overland forwarding, Customs brokerage, e-commerce services to leading global and local manufacturers and trading companies. We occupy leading positions in European, Africa and South American markets.


Our mission is to promote our clients' business development through


Our resources


 experience +30years

 staff +400

 warehouses +6

 branches +29

 countries +9

 customclearance +100000/year

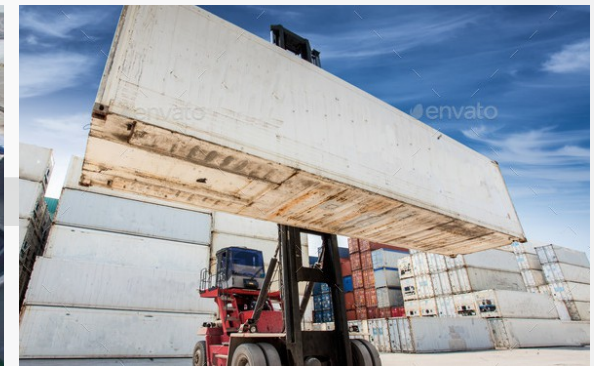
 CTNmanaged +10000/year

 vessel +3000/year



Our fields of activity

- Shipping agency
- Logistics Steel Cargoes
- Project cargo / Chartering
- Forwarders
- Custom brokers
- Stevedore / Logistical service
- Surveys / Inspections
- Shipchandlery
- Bunker and luboil trader and broker
- Launch and barge operators
- Military endowments husbandry
- Ecommerce



Locations



INCARGO S.L. is present in over 9 countries around the world, with a network of 29 offices.

2

SERVICES



Shipping agents

We have owned offices in: Madrid, A Coruña, Barcelona, Palma de Mallorca, Alcudia, Sagunto, Algeciras, Bilbao, Las Palmas, Tenerife, Fuerteventura, Vigo, El Ferrol, Gibraltar, Ceuta, Lisbon, Casablanca, Agadir, Dahkla, Laayoune, Rio de Janeiro, Panama, Callao, Cartagena, Montevideo, Singapore. Our average group total number of ship attendances is 3000 vessels/year

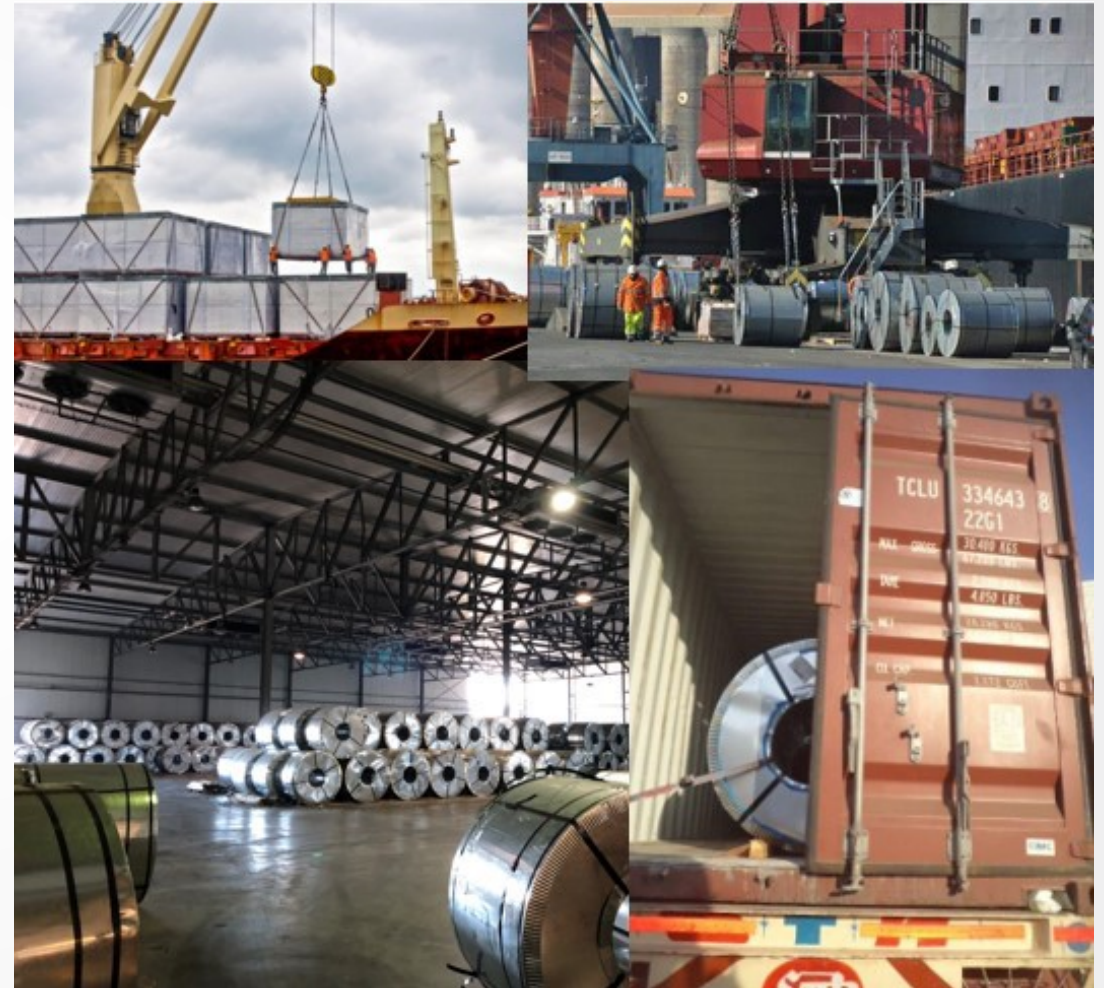


Logistics Steel cargoes

The Company undertakes the intermediary steps in the handling, importation and exportation of project and general cargoes (mainly steel products), acting as stevedores and coordinating all logistics upto final delivery to receivers.

Port operations, classification, de-consolidation, overland transport (by truck or rail), storage and tax representation upto delivery to the receivers of the goods.

In the logistics field, the company handles some 500,000 M/T's of cargo.



Project cargo / Chartering



Incargo S.L. is specialized in the global transportation of break-bulk, heavylift and project cargoes.



We offer tailor-made, innovative and efficient from factory up to site, shipping all over the world heavy lift and over-dimensional cargo supporting cargo requirements, including alternative port services. Major industrial customers entrust us with the transportation of components for their projects. Power plants, petrochemical and water treatment installations, transformers, generators, engines, cement plants and yachts.



The vessels chartered or contracted by us, are specifically chosen to suit the carriage of the type of breakbulk and conventional cargoes such as steel plates, coils, pipes and forest products.

Forwarders

service including:

a wide network of correspondents around the world enable us to provide a flexible and efficient



seafreight: L.C.L./F.C.L., buyer's consolidation

airfreight: any size, any weight, any commodity

custom brokerage: assistance with any customs requirement

multimodal transport: door to door movements

Specialized in spare parts/time critical.

specialized in services at Canary Islands

We are members of Spanish Ateia-Feteia, WCA family of logistical networks, ALFA logistics family alliance and IATA.

INCARGO handles approximately 10000 teus annually mainly in the traffics between Spain, China, India, Canada, Italy and North Europe



Customs Brokers



INCARGO is AEO registered under membership number ESAESC12000103YQ, with offices in Madrid, Valencia, Algeciras, Las Palmas, Tenerife, Palma de Mallorca, and Vigo.



We are custom brokers, member of Spanish , Ateia-Feteia organisation, with centralized clearance hub, allowing us to operate in Spain Mainland and Canary Islands. Spanish Customs office authorise Incargo to issue and act as receiver of custom Transit declaration. Our organisation operates in all main Spanish ports and Airports with bonded Warehouses in Algeciras, Las Palmas, Tenerife, Valencia, Madrid.

We enjoy a good experience and close collaboration with couriers, urgent spare parts despatchers and groupage service providers.



Stevedoring logistical services



The Company undertakes the intermediary steps in the handling, importation and exportation of project and general cargoes (steel products, paper, etc.), acting as stevedores and coordinating all logistics upto final delivery to receivers.



With respect to the above, we coordinate the logistics for deliveries of equipment to aeolic wind farms on behalf of leading manufacturers in the field on a worldwide basis, and with the assembly of industrial plants , such as combined cycle power central receivers and large civil engineering structures.



We oversee Port operations, classification, de-consolidation, overland transport (by truck or rail), storage and tax representation upto delivery to the receivers of the goods.



In the logistics field, the company handles some 500,000M/T's of cargo.

Shipchandlers



This is to certify that
Incargo S.L.
IMPA1000388

has been approved as a
SUPPLIER

Member of the
International Marine
Purchasing Association
in

August 2021 - July 2022

Susan Korber - IMPA Chair and CEO

IMPA.NET
Network | Learn | Debate

This certificate is the property of the International Marine Purchasing Association and must be returned to the Administration Office on termination from the Contract. IMPA, East Bridge House, East Street, Colchester, Essex, CO1 4PL, U.K. T: +44 (0) 206 594001 F: +44 (0) 206 594002 E: info@impa.net

- We supply fresh provisions, deck and engine stores, bonded stores, industrial gases, lubricants, chemicals, spare parts and a long list of equipments.

- We have a full range of Vecom chemicals/ gases in stock at the Canaries, Algeciras/ Gibraltar, Barcelona and Panama.

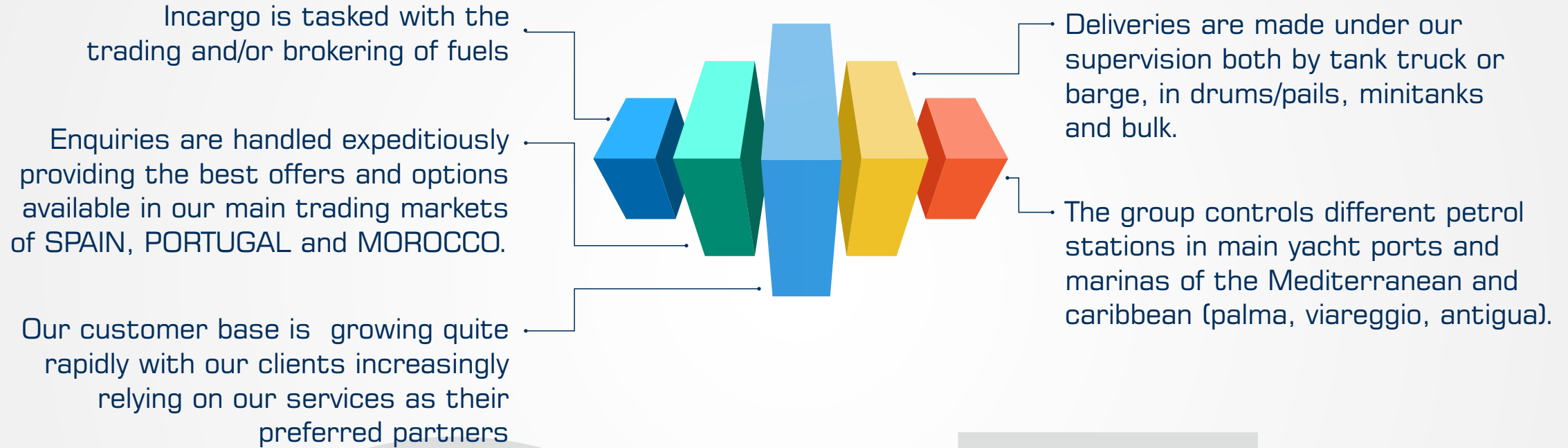
- We have a wide stock of katradis ropes of different dimensions.

- As Shipchandlers we have the quality certificate ISSA and we are members of IMPA.

- We can also coordinate Off-Port limits rendezvous deliveries for vessels transitting strategic areas e.g.Canary Islands or The straits of Gibraltar



Bunker/ luboil trader



INCARGO SL
MOBILE +34 655 888 702
EMAIL: bunker@incargo.es

Boat and barge operators

We operate three barges and a boat in the port of Las Palmas:



Maspalomas

The Maspalomas can carry up to 25,000 litres of lubricants in IBC's and drums on deck, and is also used as a slop reception barge, with a reception capacity of up to 100M/T. The barge is authorised to operate and supply up to 20 mi off the coast. It is a T class, Group A1 and is able to carry up to 25M/T of stores, provisions, spare parts etc and is also licenced to convey up to 12 persons.

Anelu

Anelu has a load capacity of max of 1,5 TM. Maximum number of pallets on deck is: 2 pallets/eur / 2 pallets / USA. It is authorised for supply up to 20 miles from the coast. And it is also licensed to transport up to 8 people.



Additionally we also own a fleet of trucks fitted with pumps for the supply of luboils at berths at the port. We also have warehouse installations where we stock the luboils for eventual delivery.

Both crafts are vetted through the COBRA (SIRE) system for luboil major principals e.g. (BP, Shell, Castrol, Cepsa and Mobil). The urkiola Mendi is also authorised to convey Shell personnel.



Urkiola Mendi

The Urkiola Mendi is able to carry up to 18,000 l. of lubricants or 15 M/T of stores, spare parts, provisions etc. on deck. She is authorised to supply up to 20 mi off the coast. It is equipped with a hiab capable of lifting up to 1500 kgs with a reach of 16m.

Maresa Dos

The Maresa Dos can transport up to 60,000 l of lubricants on deck, and is also used as a barge for waste reception, up to 200 M/T. The barge is authorized to operate up to 20 M. from the coast. It is a T class, Group A1 and can transport up to 80 M/T of supplies, spare parts, etc. and is authorized to transport up to 9 persons.



Surveys/ Inspections

We are the representatives in Spain for ICS CLASS (PANAMA)

- International convention and code certification. (IMO)
- Panama Government Certification. (DGMM)
- Annual safety inspections. (ASI)
- Belize government certificates. (IMMARBE)

And St. Vincent & Grenadines Administration

- Annual safety inspections.



INCARGO also carry out cargo inspections and bunker and condition surveys.

We have a network of well experienced surveyors who cover the entire geographical Area for Portugal, Spain, Gibraltar, Morocco, West Africa, Panama and Singapore.

- Cargo Damages
- Inspection of vessels
- Cargo and goods inspection
- Claims expertise
- Control and monitoring
- Inspection of Yachts

Military endowments husbandry

We have a wide and consolidated experience in the management and specific attention of military endowments (school Ships, oceanographics, submarine, frigates) from varios Navies from around the world.

We have the honor of being the exclusive agent of military Ships in the NATO mision operating in Spain. Additionally we serve all French Navy Ships at the Northeast of Spain as well as give support and attention to American Navy.

We have a close and consolidated relationship with the Spanish Navy to which we give support and attention on its scales around the world.



Husbandry

we are committed to military special needs and the availability, fast action and response needed. (24/7) with the maximun quality service and security through our extensive network with consolidated experience.



Fuels and lubricants

quality fuels and lube providers all around the world



Supplies and provisions

wide network around the world.



Spare parts

flexible and efficient services.



Crew change

flights, accommodation, visas and other services.



INCARGO S.L.

+ 30 years working for you

3

QUALITY



Quality Assurance

We are ISO 9001 certified by Lloyds Register for:



Logistical services



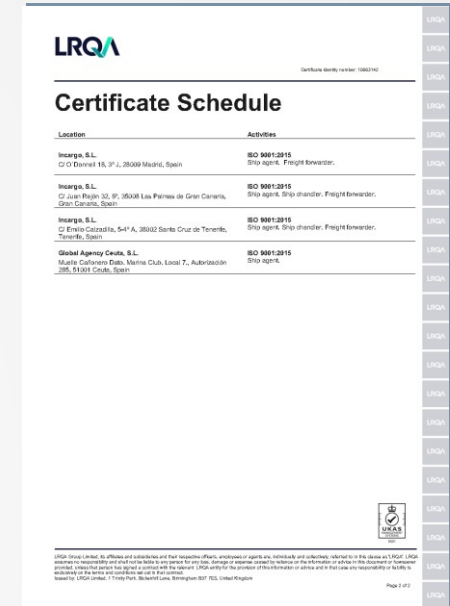
Shipping Agents



Shipchandlery



Forwarder



4

LOGISTIC & WAREHOUSE



Logistic & warehouse



Services Scope



Logistic Hub Based Services



Integrated Warehousing & Distribution Services



Total Supply Chain Solutions



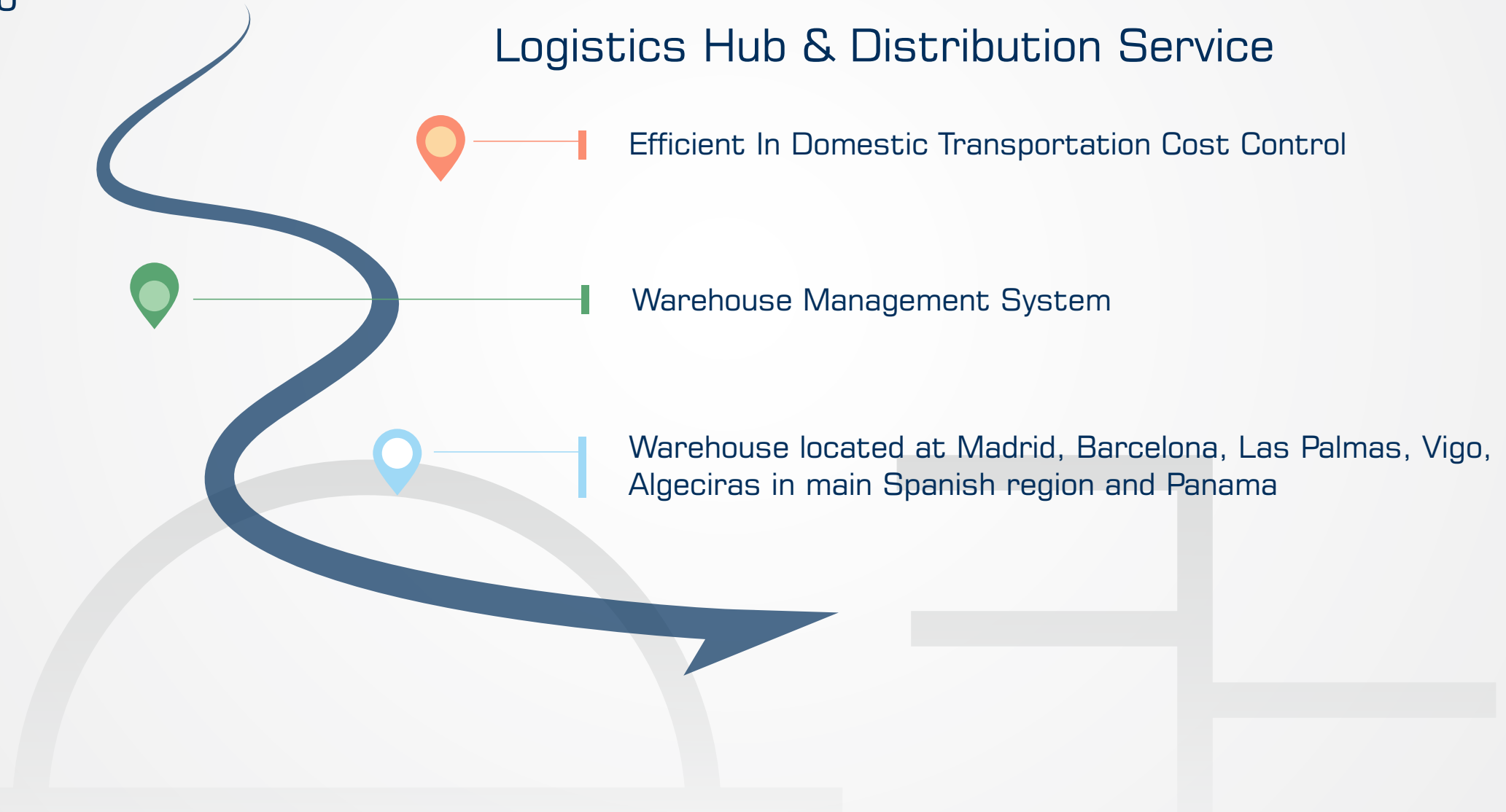
Vendor & Inventory Management



Consultancy Services

We are strategically placed to give the best care to our customers international cargo

Logistics Hub & Distribution Service





Warehouse Service

- Consolidation
- Deconsolidation
- Garment On Hanger
- Labelling & Barcoding
- Palletization
- Pick & Pack
- Quality Control (QC)
- Repacking
- Scanning
- Shrink Wrapping
- Sorting
- Storage

5

ECOMMERCE



Airfreight



Customs
Clearance

One Price



Parcel
Tracking



Last-Mile
Delivery

Features

- ◆ All Services Only In ONE Price (Exclude duty & VAT)
- ◆ Fast Transit Time (Approx. 5 - 7 Days)
- ◆ Delivery To All Destination In European Union
- ◆ Digital Clearance Process
- ◆ EORI / VAT Number Is Required To Sell Your Products



SOLUTION

Ecommerce Flowchart B2B & B2C



What do we offer

- 3 Warehouses: Barcelona, Valencia, Madrid
- VMI warehouse (VMI bond warehouse and normal warehouse)
- 11 Meters high designed for e-commerce fulfilment, close to Amazon, XPO and TNT WAREHOUSES, deconsolidation, palletization, wrapping, labelling.



- Last mile delivery own courier company. delivering in Spain/Portugal in 24/72 hours
- Integración different systems for traceability

6

WHY US



Our Outlook/Growth together

Your growth in global business and network will be extended, with us who act as your gateway

Your resources will be optimized and operational flow and I.T. solutions will be advanced

You can compete in the context of globalization with our assistance

You can find your reliable and professional logistics services provider in proximity

You are always connected to the world with our global presence





OUR CONTACT

Contact

SPAIN

HEAD OFFICE

C/ O'donnell 18, 3ºJ
28009 Madrid (Spain)
Tel: 34 914 364 640
email: ship@incargo.es

BRANCH OFFICES

Bilbao

Tel: 34 914 364 660
email: bilbao2@incargo.es

La Coruña

Tel: 34 986 918 2556
24Hr Tel: 34 632 633 121
email: laacoruna@incargo.es

Palma de Mallorca

Avenida Gabriel Roca 37, Local C
07014 Palma de Mallorca
Tel: 34 971 722 532
Fax: 34 971 511 726
email: palma@estelashipping.net
24Hr Tel: 34 616 453 111
34 600 504 924

Tenerife

C/ Emilio Calzadilla 5 4ºA
38002 Santa Cruz de Tenerife
Tel: 34 922 278 825
Fax: 34 922 273 659
email: tenerife@incargo.es
Mobile waterclerk on duty:
34 655 888 779
34 665 657 949

Las Palmas

C/ Juan Rejón 32, 6ª
35008 Las Palmas deGC
Tel: 34 928 469 140/62
Fax: 34 928 470 214
email: laspalmas@incargo.es
Mobile waterclerk on duty:
34 617 454 397
34 610 712 325

Barcelona

C/ Buenaventura Muñoz, 15 Entre Planta
08018 Barcelona (Spain)
Tel: 34 93 485 38 69
Fax: 34 93 485 38 73
email: barcelona@estelashipping.net
24Hr Tel: 34 600 504 924

Los Barrios - Algeciras

Pol. Ind. Las Marismas de Palmones
C/Mar Cantábrico (Esquina C/ Océano Pacifico)
11379 Los Barrios (Cádiz)
Tel: 34 856 223 185
Fax: 34 856 223 192
email: algeciras@incargo.es
24Hr Tel: 34 670 545 050

Ceuta

Muelle Cañonero Dato, Marina Club
autorización 285
51001 Ceuta (Spain)
Tel: 34 956 524 881
email: operations@globalceuta.com
24Hr Tel: 34 609 136 246

Vigo

Muelle de trasatlánticos s/n
Vigo (Spain)
Tel: 34 986 918 256
34 629 750 207
email: vigo@incargo.es
24Hr Tel: 34 672 633 121

El Ferrol

Muelle curuxeiras sin número,
edificio sanidad 1 D, Ferrol 15401
email: ferrol@incargo.es
24Hr Tel: 34 672 633 121

Sagunto

Tel: 34 962 672 313
email: sagunto@incargo.es

Alcudia

C/ Teodoro Canet, 2
07410 Alcudia (Mallorca-Spain)
Tel: 34 971 722 532
Fax: 34 971 711 526
email: palma@incargo.es
24Hr Tel: 34 600 504 924

Contact

PORTUGAL

ARENTERN-Agência Navegação
Lda (INCARGO GROUP OF COMPANIES)

Edifício Lisboa Oriente
Avenida Infante Dom Henrique, 333,
Edifício 4, Piso 5, Escritório 62
1800-297 Lisboa
email: lisbon@incargo.pt
Tel: + 351 211 531 178
Fax: + 351 211 531 181

GIBRALTAR

Incargo shipping services Ltd.
Office 7, 12A North Mole Road,
GX11 1AA Gibraltar
Tel: +350 20041777/20041778
Fax: +350 20040481
email: operations@incargogibraltar.com
24Hr Tel: +350 54505000

MOROCCO

CASABLANCA HEAD OFFICE:
HAMAG Sarl
Espace Yousra 355 boulevard
Mohamed V Etage 10 20310
Casablanca
Tel: +212 522 245858
Fax: +212 522 247247
General Director:
Mr Karim El Mezouar
Tel: +212 661 397 573
email: karim@hamag.ma
Operations: Mr Abdelali Bensouda
Tel: +212 661 441 491
email: abensouda@hamag.ma
HAMAG Casablanca/Mohamedia/
Jori lasfar
Bd Med V, 29, Rue Bapaume
Casablanca.1 Etage-N°5
Tel: +212 522 24585
Fax: +212 522 247247
Mr B.Hassan
Tel: +212 661 412 365

LONDON

REPRESENTATIVE OFFICE:
Ron Davies
Harwin Shipping Agency Ltd
40 Bowling Green Lane, London
EC1R ONE
Tel: +44 8707669721
Mob: +44 7850284078
AOH: +44 1449722374
email: harwinship@aol.com

MAURITANIA

MSM SHIPPING
ZRC440 Avenue Moktar Ould Daddah
9001 Nouakchott - Mauritanie
Tel.: +222 45242929
Cell.: +222 44008822
agency@msm-shipping.com
www.msm-shipping.com

Contact

Addresses

BRASIL

Captain Raffaele Di Luca
INCARGO SHIPPING SERVICES
BRASIL& REPRESENTAÇÕES LTDA
Rua ten.Arantes Filho,390 22451-
270 Gávea Rio de Janeiro-RJ,Brasil
Tel: 00 55 21 25127215
Mob: 00 55 21 999898579
email: dilucabrasil@incargo.es

URUGUAY

ESTELA SHIPPING
Milsoft SA
Pedro Berro 640 SUITE 801
11300 MONTEVIDEO
(Fully licenced for all Uruguayan ports)
Tel: +58997075411
email: uruguay@incargo.es

PANAMÁ

ESTELA SHIPPING
International Business Park,
Howard, Building 3835, Tower C,
Office NO.101
PO BOX, 0843-01371 Panama,
Tel: +507 264-2222
Fax: +507 264-5225
24Hrs: +50766145127
email: panama@estelashipping.net
Country Manager: Eric Velasquez
Tel: +507 66184615
email: eric.velasquez@estelashipping.net

PERÚ

ESTELA SHIPPING
Avenida del Ejercito 1180, Oficina 1302
Magdalena del Mar 15076 Lima (Perú)
Tel: +51 13775011
email: peru@estelashipping.net
ops.peru@estelashipping.net
Julio Benavente (ship agency)
Tel: +51 959529885
Julio Villamil (frieght forwarding)
Tel: +51 959529966

SINGAPORE

LETH INCARGO MARINE SERVICES PTE . LTD
THE CENTRAL
73 Circular Road #03-01
Singapore 049427
Telfs.: +65 975 72 197
+65 838 34 399
+65 969 61 213
email: office@lethincargo.com
Website www.lethincargo.com

Joish Paul
Director
Direct Line +65 -66920110
Mobile +65 97 57 21 97
email: joish@lethincargo.com
(for non-operational matters)
Skype : joishpaul